

*The Official Hotel to host the  
Holiday Pops Spectacular  
Guest Artists*

Fourth and Chestnut • 314-241-7400 • 800-444-ADAM • [www.adamsmark.com](http://www.adamsmark.com)

Other Adam's Mark Hotel Locations:  
Buffalo-Niagra, NY • Dallas, TX • Denver, CO • Indianapolis, IN

## The Compton Heights Concert Band

Edward Dolbashian, Music Director/Conductor  
Harry F. Swanger, President/Executive Director

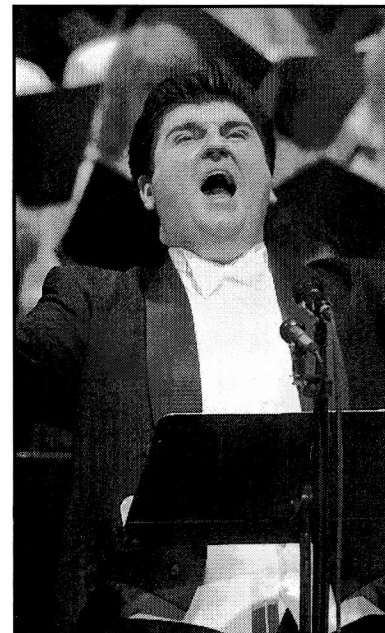
Presents its 9th Annual

# Holiday Pops Spectacular!

Powell Symphony Hall  
Tuesday, December 12, 2006  
2:00 PM and 8:00 PM

with

**Hugh Smith, Tenor**  
**Sigrun Hjalmtysdottir, Diddú, Soprano**  
St. Louis Metro Singers  
Compton Heights Band Herald Trumpets  
Bishop DuBourg Swing Dancers



Hugh Smith



Sigrun Hjalmtysdottir

## The Compton Heights Concert Band

- 1976 Band Formed in living room in Compton Heights neighborhood
- 1977 First Concert in Tower Grove Park
- 1979 First Holiday Pops Concert
- 1980 *TuneFul Tuesdays* now *Musical Mondays* summer concert series in Tower Grove Park
- 1983 VP Fair-audience of 1 million, band bus ends in river!
- 1984 Band charity bingo begins
- 1986 *Sunday Serenades* concert series in Francis Park begins
- 1988 Band hosts Association of Concert Bands Convention
- 1989 First Tour to St. Joseph and Omaha
- 1992 First indoor series - Band on Grand and First Missouri Arts Council tour - Hermann, MO
- 1998 First Powell Symphony Hall Concert
- \* 1998 First "Hugh Smith Opera Tour" (Paris)
- 2000 "Sunrise Serenades" TV Show Aired for 18 months on Saturdays, KMOV, Channel 4, CBS
- \* 2004 Band celebrates 25th Anniversary of summer concert series!
- \* 2006 Band Celebrates 30th Anniversary!

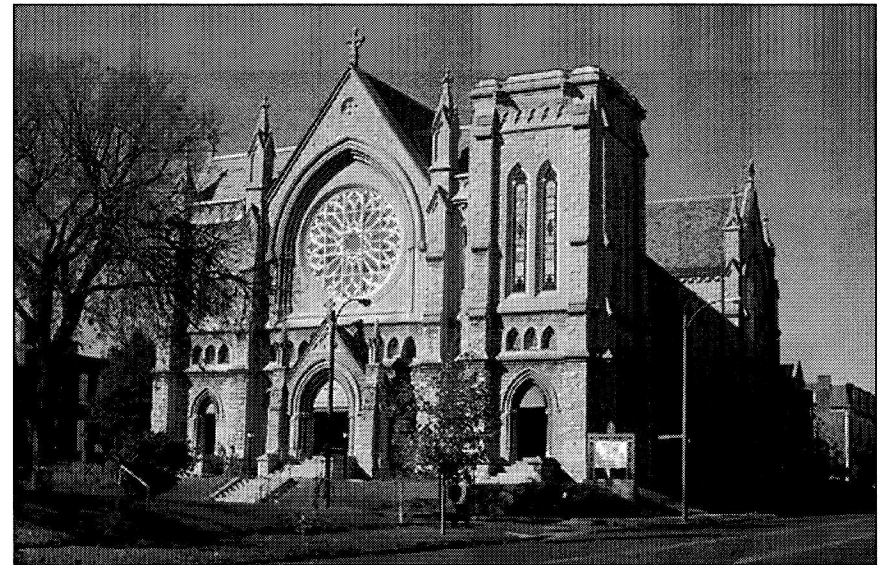
The driving force behind the Compton Heights Concert Band is a preservationist philosophy determined to promote the **American Concert Band**, the unique American art form created by **Patrick Gilmore** in the 1860's and perfected by **John Philip Sousa** at the turn of the last century, and to play the fine concert band literature of yesteryear. As with jazz, another unique American art form, concert bands and concert band literature are undergoing a resurgence in America. Sousa's concerts were dubbed "**the world's greatest pops concerts**". In this tradition, a Compton Heights Concert Band concert features programming appealing to all ages and musical tastes; "something for everyone".

From its modest beginning in the Compton Heights neighborhood livingroom of band organizer, President and Executive Director, **Harry F. Swanger**, in 1976, the Band quickly became a metropolitan St. Louis area tradition, attracting over 50,000 listeners annually to its famed summer series, ***Sunday Serenades*** in Francis Park and the tandem series ***Musical Mondays*** in Tower Grove Park. **This year marks the 9th Annual highly successful Compton Heights Band Holiday Pops at Powell Hall. Performances in the past have included headliners such as Peter Nero, piano; Doc Severinsen, trumpet; and the perennial summer and Powell Hall crowd favorite, Hugh Smith, tenor.** Other featured artists include: BBC Cardiff 2005 Singer of the World, Nicole Cabell; Arturo Sandoval, jazz/classical trumpet wizard; Sigrun Hjalmtysdottir, "Diddú", Soprano, David Morris, International Whistling Champion, Buckwheat Zydeko, Sukay, "Music of the Andes"; Alex Klein, Oboe; James Christensen, Walt Disney World; BNFL Brass Band; Butch Wax & The Hollywoods with Billy Peek; the late Johnnie Johnson; Jerry Robinson & Sax-O-Peel, The Lennon Brothers; the late William Warfield, Baritone; Debbye Turner, marimba; Ricardo Morales, Metropolitan Opera principal clarinet; the late Myron Floren, accordion; Keith Brion, Sousa portrayer; The Legend Singers; Robert Ellison, baritone; and Beverly Stewart-Anderson, soprano.

**Edward Dolbashian**, Music Director & Conductor, is the orchestra and opera conductor at the University of Missouri, Columbia, the Clayton Symphony, and the Alton Symphony Orchestra. He was appointed conductor of the Compton Heights Concert Band in September, 1998. He is a professional oboist and an English Horn player, originally from New York. **Lucy Schroeder**, announcer, is the wife of band vice-president and tubist **Jon Schroeder**, an original member of the Compton Heights Band!

**In addition to weekly Band rehearsals, members devote thousands of volunteer hours at bingo at Bandwagon Hall, 6245 Lemay Ferry Road on Friday and Saturday nights** throughout the year. The Band is also financially supported by the **Adam's Mark Hotel, Catherine Manley Gaylord Foundation, Clifford Willard Gaylord Foundation, Foot and Ankle Associates, Missouri Arts Council, Regional Arts Commission, Southwest Bank, St. Louis Parks & Recreation Department, and Bandwagon Members.** To make a tax deductible donation, send to: Compton Heights Band, **3120 Lafayette Ave, St. Louis, MO 63104.** (314) 776-2227 and (314) 772-9797 fax. Email: [chband@stlouis.missouri.org](mailto:chband@stlouis.missouri.org) [www.chband.org](http://www.chband.org)

## Compton Heights Concert Band's New Home



**Immaculate Conception / St. Henry's  
Architect: Barnett, Haynes & Barnett**

A Gothic building in stone, dedicated in 1908 as the newest home of an Irish congregation. It stands on Lafayette Avenue on the city's near south side, less than a block from the bustle of I-44. Three rose windows punctuate the soaring interior; stained glass windows are even found inside the bell tower (which gives the appearance that it was meant to be raised to a greater height when funds allowed.) From Built St. Louis: City Churches [www.builtstlouis.net/churches/church18.html](http://www.builtstlouis.net/churches/church18.html).

Note from the President:

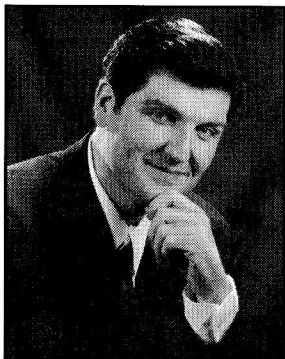
This past summer the Compton Heights Concert Band, in addition to presenting *Sunday Serenades* and *Musical Mondays* concerts, was quite busy, to say the least! We had to vacate our old band office and rehearsal room, our home for over 20 years, and move both to our new home at 3120 Lafayette Avenue, St. Louis, MO 63104, the former Immaculate Conception/St. Henry Catholic Church and Rectory, just one block East of Compton and easily reachable by I-44 taking the Grand Blvd exit in either direction.

We are buying the historic Immaculate Conception complex which will provide us with a terrific rehearsal and concert facility for performing arts groups, as well as the location of our office headquarters.

Stay tuned for information on future activities at our concert hall, as well as a Capital Campaign to be announced soon to fund, renovate, and endow this wonderful, magnificent, historic complex!

Very truly yours,  
Harry Swanger, President/Executive Director

# Super Salebration!



**Each and Every  
Compton Heights Band  
Powell Hall  
CD and DVD Album  
is On Sale For  
\$15!**

**Available in the Lobby!  
Just Released! The 2005 Concert  
Recording!**



### To Order By Mail:

- Indicate CD \_\_\_ 1998 Holiday Favorites and Tenor Classics  
 CD \_\_\_ 1999 Holidays with Hugh  
 CD \_\_\_ 2000 A Hugh Smith Holiday Spectacular  
 CD \_\_\_ 2001 \_\_\_ Best of Hugh Smith  
 CD \_\_\_ 2001 \_\_\_ Best of the Holidays  
 CD \_\_\_ 2001 \_\_\_ America's Favorites  
 CD \_\_\_ 2002 A Holiday Spectacular featuring Hugh Smith & Peter Nero on Ave Maria  
 DVD \_\_\_ 2002 Powell Hall DVD  
 CD \_\_\_ 2002 Powell Hall CD  
 CD \_\_\_ 2003 Powell Hall 2-CD Pack  
 DVD \_\_\_ 2003 Powell Hall 2-DVD Surround Sound Pack  
 CD \_\_\_ 2005 Powell Hall 2-CD Pack  
 DVD \_\_\_ 2005 Powell Hall 2-DVDPack

Add \$5 for shipping and handling (if ordering by mail)

Name: \_\_\_\_\_  
 Address: \_\_\_\_\_  
 City \_\_\_\_\_ State \_\_\_\_\_ Zip \_\_\_\_\_ - \_\_\_\_\_  
 Phone (Daytime) \_\_\_\_\_  
 Charge (VS,MC,AE,DS) Number: \_\_\_\_\_  
 Expiration Date: \_\_\_\_\_ Total Amount \$ \_\_\_\_\_

**Check payable to: Compton Heights Band, Inc.  
 3120 Lafayette Avenue  
 St. Louis, Missouri 63104**

Phone: (314) 776-2227 FAX: (314) 772-9797

# "Eating and Drinking Benefits the Band!"

The Band is participating in a powerful fundraising opportunity sponsored by Schnucks, called "eScrip". If you are a current Schnucks customer, every time you make a purchase and use your eScrip card, you make a donation to the Band! Depending on how much you purchase in any month, as much as 3% of that amount is automatically credited to the Band's account with eScrip.



We have established a group number for "Compton Heights Band, Inc."; 3120 Lafayette Avenue in St. Louis: #500005371.

If you would like to participate, you can pick up an eScrip card at any Schnucks Customer Service counter. Each card must be registered (either by phone or on the Internet) to the Band account in order for us to benefit from your Schnucks purchases.

We would be happy to register you for this Band fundraiser if you provide us with your name and full address below. Once we have registered you, we will send an eScrip card to you by mail. Once your card is registered, you're all set to help us with this fundraiser! Present your eScrip card to the cashier at the beginning of the checkout process. It's as easy as that! Prescription and liquor purchases qualify for the program; however, purchases of lottery tickets, gift cards and taxes are currently exempt.

Name: \_\_\_\_\_  
 Address: \_\_\_\_\_  
 Phone: \_\_\_\_\_ Email: \_\_\_\_\_

**We have a limited number of eScrip cards at the promotional table in the lobby. Please ask for one if you prefer to personally register to support the Band in this fundraiser.**

Questions? Call or e-mail me.  
 Kitty Swanger, Coordinator  
 Phone: 314/776-7764 E-mail kittyswanger211@earthlink.net



Edward Dolbashian, Music Director/Conductor  
Compton Heights Concert Band



**Edward Dolbashian** has been Music Director of the Missouri University Philharmonic in Columbia, Missouri, since 1984; Music Director of the Alton Symphony Orchestra, in Alton, Illinois, since 1993; and the Compton Heights Concert Band since September 1998. He is also the conductor of the Clayton Symphony.

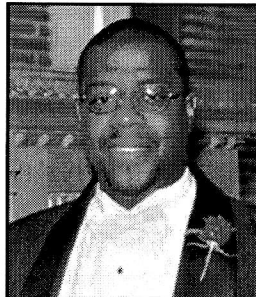
Mr. Dolbashian began his musical training as a student at New York's famed High School of the Performing Arts. He earned his degrees in oboe performance at the Hart College of Music, Hartford, CT.

His conducting career began as director of the Holyoke Symphony Orchestra in Holyoke, MA. He studied conducting at the prestigious Pierre Monteaux School of Orchestra Conducting in Maine, under Charles Bruck; and at Yale University as student conducting assistant to Otto Werner-Mueller leading to a Master of Musical Arts degree in Orchestral Conducting. Further studies took place at the Tanglewood Institute, with Leonard Bernstein, Seiji Ozawa, Andre Previn, and Gustav Meier, and the Boris Goldovsky Opera Conducting Seminar.

Mr. Dolbashian was a member of the Hartford Symphony for 11 years and was principal oboe of the Hartford Chamber Orchestra, the Goldovsky Opera Company, and the Hudson Valley Philharmonic. He debuted as oboe soloist in Town Hall, NY, NY, 1969.

Kevin McBeth, Music Director  
St. Louis Metro Singers

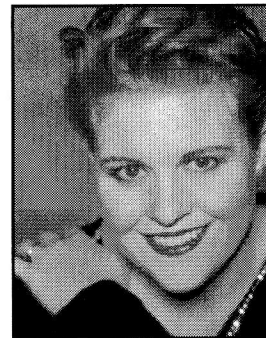
**Kevin McBeth** was appointed Music Director of the St. Louis Metro Singers in August 2001. A native of Houston, Texas, he serves as the Director of Music at Manchester United Methodist Church in suburban St. Louis where he is full-time administrator for the Music Department, which includes 19 choral and handbell ensembles involving nearly 500 children, youth and adults. Over the past ten years, he has conducted honor and festival choirs (choral and handbell) in seven states. From 1999 to 2001, he served as the Assistant Conductor of the St. Louis Symphony Chorus.



Kevin McBeth is a graduate of Houston Baptist University and has done graduate studies in Choral Conducting at the University of Houston. In addition to being a published composer and author, he was also choral music editor for Abingdon Press. Mr. McBeth has served on the board of several musical organizations, including the Iowa Choral Directors Association (ICDA), the Missouri Choral Directors Association (MCDA), and the American Guild of English Handbell Ringers (AGEHR).

In 1998, he made his first appearance as a singer at Carnegie Hall and returned in January of 2000 to make his conducting debut! He returned to Carnegie Hall in 2002 to conduct a performance of the Rutter Requiem. Choirs under his direction have also performed at regional and national gatherings for choral and handbell music, including both state and division ACDA conventions. Mr. McBeth has prepared choruses for performances with Sarah Brightman and Andy Williams, and has conducted a concert featuring Garrison Keillor. His latest engagements include leadership at the MCDA Summer Convention, and a fourth appearance at Carnegie Hall.

Sigrun Hjalmtysdottir, Diddú



**Sigrun Hjalmtysdottir (Diddú)** was born in Reykjavik, Iceland. In 1972 she was chosen to take the part of Miss Guomunsen in the television adaptation of *Brekukotsannall* by the Nobel Prize winning author Halldor Laxness. She began drama studies in 1974, and has acted on stage, on television and in films, including *Karlatorinn Hekla*, directed by Guony Halldorsdottir, and *Biodagar*, directed by Friorik Por Frioriksson.

During the years 1975-78 she worked with the group *Spilverk pjoðanna*, and her many recordings include ballads, light songs and opera.

Sigrun studied at the Guildhall School of Music and Drama in London from 1979 to 1984, graduating with the AGSM diploma, and completed postgraduate studies there in 1985. In 1987-88 she took private lessons in Italy, and since then she has concentrated on the operatic repertoire.

Her operatic debut was with the Icelandic Opera in the role of Olympia in Offenbach's *Tales of Hoffmann* at the National Theatre. Other roles include Susanna in the *Marriage of Figaro*, the soprano part in Orff's *Carmina Burana*, *Papagena* and the *Queen of the Night* in the *Magic Flute*, Lucia in *Lucia di Lammermoor*, Violetta in *La Traviata* and Adina in *L'elisir d'amore* (all with the Iceland Opera), and Gilda in *Rigoletto* with the Gothenburg Opera.

Diddú sang with the Iceland Symphony Orchestra opposite tenor Jose Carreras, and appeared with orchestras and on the recital platform in the Nordic countries, the Baltic States, Britain, Italy, United States, Japan and elsewhere. In March, 2005, she sang with Placido Domingo and the Iceland Symphony and has been engaged in performances in Paris and Strassbourg.

Sigrun Hjalmtysdottir has received many awards for her singing, including the *Principals Prize* at the Guildhall School of Music and Drama (1985); the *Internazionale Concorso Biennale F. Mecenate* in Italy (1988); the Knight's Cross of the Icelandic Order of the Falcon (1995); and was made a Grand Mistress of the Finnish Order of the Lion in 1997.

In 2006, Diddú appeared on *A Prairie Home Companion* with Garrison Keillor. Broadcast from the Icelandic National Theatre with special guests, Diddú and John C. Reilly; the show aired on Public Radio (KWMU 90.7) in St. Louis on May 20, 2006. She was the only female singer in the show and was included in a script of *Guy Noir*.

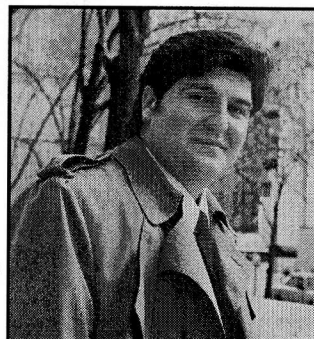
Three years ago, she appeared with the Compton Heights Concert Band in the authentic "Sousa" concert. The last two years she paired with Hugh Smith during **Sunday Serenades & Musical Mondays**. It was magnificent! We are again thrilled to present this world class soprano as soloist with the Band!



## Hugh Smith, Tenor

**Hugh Smith** made his professional debut in *Madama Butterfly* at the Teatro San Carlo, Naples, and has since appeared in leading tenor roles throughout the world including at Opera de Paris, l'Opera National de Paris, Berlin Deutsche Oper, Concertgebouw, Hamburgische Staatsoper, Lithuanian Opera, Netherlands Opera, New National Theatre, Tokyo, Opera North, Opera de Puerto Rico, and the Edinburgh Festival.

In the United States, he appeared at the Lyric Opera of Chicago, Metropolitan Opera in the Parks, Richard Tucker Gala, Baltimore Opera, Cincinnati Opera, Dayton Opera, Houston Grand Opera, Michigan Opera Theatre, Opera Company of Philadelphia, Opera Pacific, San Diego Opera, San Francisco Opera, Spoleto Festival, Toledo Opera, and at the Kennedy Center Awards in honor of Luciano Pavarotti.



In 2004, Hugh performed *Messa Da Requiem* by Giuseppe Verdi at the Deutsche Oper Berlin. He also appeared as Gustaf III., König von Schweden in *Un Ballo in Maschera* by Giuseppe Verdi at the Deutsche Oper Berlin. He soloed in Mahler's Symphony No. 8 "Symphony of a Thousand" at the Alfredo Kraus Auditorium, Las Palmas de Gran Canaria. He returned to the Canary Islands for Dvorák's *Stabat Mater* with the Orquesta Filarmónica de G. Canaria. Last summer, Hugh debuted at the National New Theater, Tokyo, Japan, as Don José in *Carmen*. In the Fall, he appeared twice at the Concertgebouw, under Maestro Edo de Waart to rave reviews. And, he toured with Opera North in their production of *Manon Lescaut*. A group of 17 people from St. Louis traveled to England to see Hugh in *Manon Lescaut!* The group tours are organized by Band President & Executive Director Harry Swanger, and his wife, Kitty. December 2004, Hugh appeared with famed trumpeter, Doc Severinsen in Pops at Powell with the Compton Heights Concert Band.

January 2005, Hugh sang Mahler's Symphony No. 8 with the Rotterdams Philharmonisch Orkest under Maestro Valery Gergiev. In March, he was at the Netherlands Opera in *Norma*. In April, he performed a recital at Bowling Green State University and sang with the Madison Symphony in Mahler's Symphony No. 8. In the summer, Hugh appeared in *Madame Butterfly* at Tokyo's New National Theatre as well as coming to Saint Louis for the Compton Heights Band's dual concert series, *Sunday Serenades & Musical Mondays*. In September he performed in Norway. And, in December he was in St. Louis, again for the Band's annual Holiday Pops concerts at Powell Hall!

January 2006 took him to Tel-Aviv to for *Don Carlos*. He traveled with Opera North in Wales for three months for weekly performances of *Mazeppa*. He appeared twice this summer with the Compton Heights Band. He performed his Wagner's *Lohengrin* in Lyon, France, October 2006. He just got off the plane from Amsterdam, where he performed at the Concertgebouw in Puccini's *Fanciulla del West!* He travels to Barcelona for the rest of the December 2006. In January/February 2007 he will be at Florida Grand Opera for *Manon Lescaut*.

Hugh holds a Masters in Music from Bowling Green State University, Ohio and continued his studies at the Academy of Vocal Arts, Philadelphia.

### Opera Performances:

Alfredo, La Traviata (Lyric Opera of Chicago, Opera de Puerto Rico, and Theatre Sao Carlos in Lisbon)  
Cavaradossi, Tosca (Netherlands Opera)  
Des Grieux, Manon Lescaut (Opera Pacific, Opera North, and Bayerische Staatsoper)  
Don Carlo, Don Carlo (Opera National de Paris and Lithuanian Opera)  
Don Jose, Carmen (National New Theater, Tokyo; Opera Company of Philadelphia, Michigan Opera Theatre, and Toledo Opera)  
Enee, Les Troyens (Chatelet Theatre Musical De Paris)  
Faust, Faust (Dayton)  
Forresto, Attila (Lyric Opera of Chicago and Bologna)  
Gustaf III., König von Schweden in Un Ballo in Maschera (Berlin Deutsche Oper)  
Laca, Jenufa (Lyric Opera of Chicago, Charleston and Spoleto USA)

Lenski, Eugene Oregin (Opera Pacific and Academy of Vocal Arts)  
Manrico, Il Trovatore (Opera Pacific and Academy of Vocal Arts)  
Matteo, Arabella (Chatelet Theatre de Musicale de Paris)  
Lohengrin, Lohengrin (Opera de Lyon, France)  
Manrico, Il Trovatore (Opera Pacific and Academy of Vocal Arts)  
Matteo, Arabella (Chatelet Theatre de Musicale de Paris)  
Mazeppa (Welsh National Opera)  
Pollione, Norma (Opera Geneve, Berlin Staatsoper, San Diego Opera, Netherlands Opera)  
Pinkerton, Madama Butterfly (Tokyo; Houston; San Francisco; and Napoli - Teatro San Carlo)  
Riccardo, Un Ballo in Maschera (Academy of Vocal Arts)  
Rodolfo, La Boheme (Cincinnati, Toledo, Dayton, Hamburgische Staatsoper and Baltimore Opera)

### World Premier:

*An American Requiem* by Richard Danielpour, November 14/15, 2001.

### In-Concert:

Beethoven's Ninth (Puerto Rico Symphony)  
Die Liebe der Danae (Avery Fisher Hall, NY)  
Giovanna d'Arco (Carnegie Hall)  
L Fanciulla del West (Concertgebouw)  
Le roi Arthus (King Arthur) (Avery Fisher Hall)  
Lelio ou Le Retour a la vie (Orchestre Revolutionnaire et Romantique)  
Les Troyens (Edinburgh Festival)  
Manon Lescaut (Concertgebouw-Radio Filharmonisch Orkest Holland)  
Nabucco (Carnegie Hall)  
Te Deum op. 22 by Berlioz (Concertgebouw-Radio Filharmonisch Orkest Holland)  
Tosca (Met in the Parks, NY)  
Messa Da Requiem by Giuseppe Verdi (Deutsche Oper Berlin, BBC Philharmonic; Bologna, teatro comunale)  
Symphony No. 8 by Mahler (Rotterdams Philharmonisch Orkest, Orquesta Sinfonica de Galicia, Orquesta Sinfonica de Tenerife, Madison Symphony)

### Soloist:

American Symphony Orchestra & Concert Chorale of New York  
BBC Philharmonic  
Bochum Philharmonic  
Bowling Green University Orchestra  
Collegiate Chorale at Carnegie Hall  
Compton Heights Concert Band of St. Louis  
Dayton Philharmonic  
Fort Wayne Philharmonic  
Kennedy Center Awards in honor of Luciano Pavarotti  
Madison Symphony  
Orquesta Sinfonica de Galicia, Orquesta Sinfonica de Tenerife  
Pacific Symphony  
Philadelphia Orchestra  
Puerto Rico Symphony  
Radio Filharmonisch Orkest Holland  
Rotterdams Philharmonisch Orkest  
St. Louis Symphony Orchestra  
Teatro Comunale di Bologna  
Toledo Symphony  
Tucker Gala, NY

**Recordings:** *An American Requiem* by Richard Danielpour.

*King Midas in Die Liebe der Danae* by R. Strauss (Avery Fisher Hall, NY).

**Most Recent Recording:** *Bellini: Norma / Julian Reynolds/Netherland CO, Hasmik Papian, Hugh Smith, Irini Tsirakidis, Giorgio Giuseppini [2DVD] Label BBC Opus Arte.*

**The Compton Heights Concert Band Recordings at Powell Symphony Hall with Hugh Smith are available at the promotional table in the lobby!**

# The Compton Heights Concert Band's Holiday Pops Spectacular

Edward Dolbashian, Music Director & Conductor  
Harry F. Swanger, President/Executive Director  
Lucy Schroeder, Announcer

Tuesday, December 12, 2006  
2:00 PM & 8:00 PM

**Hugh Smith, Tenor**  
**Sigrun Hjalmtysdottir, Diddú, Soprano**  
**St. Louis Metro Singers**  
**Bishop DuBourg Swing Dancers**  
**Compton Heights Band Herald Trumpets**

## Program

<b>Olympic Fanfare &amp; Theme</b>	John Williams Compton Heights Band Herald Trumpets
<b>Jingle Bell Rock</b>	Joe Beal and Jim Boothe
<b>Mister Santa</b>	Pat Ballard / Arr. Paul Yoder Bishop DuBourg Swing Dancers, Johnny Rabbit, WIL-AM Radio, Guest
<b>On With the Snow</b>	Arr. Douglas Wagner Hugh Smith, Sigrun Hjalmtysdottir
<b>Charlie Brown Christmas</b>	Arr. Bob Lowden
<b>Gesu Bambino</b>	Pietro A. Yon/Arr. Ian Frenkel
<b>Pie Jesu</b>	Andrew Lloyd Webber Hugh Smith, Sigrun Hjalmtysdottir
<b>Bells of Christmas</b>	Arr. John Higgins
<b>Amigos Para Siempre</b>	Andrew Lloyd Webber/D.Black Hugh Smith, Sigrun Hjalmtysdottir (Trans. by Jerry Robinson)
<b>Libiamo, libiamo</b> from La Traviata	Giuseppe Verdi / Donald W. Stauffer Hugh Smith, Sigrun Hjalmtysdottir

## Intermission

<b>Coronation March</b>	John Williams Compton Heights Band Herald Trumpets
<b>Sleigh Ride</b>	Leroy Anderson Compton Heights Band Herald Trumpets

<b>West Side Story</b>	Steven Sondheim/Leonard Bernstein Hugh Smith, Sigrun Hjalmtysdottir
<b>Christmas on Broadway</b>	Arr. John Higgins St. Louis Metro Singers
<b>Panis Angelicus</b>	Cesar Franck
<b>Ave Maria</b>	Giulio Caccini / Arr. Wil van der Beek (Trans. by Jerry Robinson)
<b>A Christmas Festival</b>	Leroy Anderson St. Louis Metro Singers; Kevin McBeth, Conductor
<b>The Prayer</b>	Foster/Sager/Trans. Jerry Robinson Hugh Smith; Sigrun Hjalmtysdottir
<b>O Holy Night</b>	Adolph C. Adam/Calvin Custer Hugh Smith; Sigrun Hjalmtysdottir, St. Louis Metro Singers
<b>Hallelujah Chorus</b>	G.F. Handel/Chiaffarelli Hugh Smith, Sigrun Hjalmtysdottir, St. Louis Metro Singers, and the Compton Heights Band Herald Trumpets

## Sing-Along Hallelujah Chorus

[: Hallelujah! Hallelujah! Hallelujah!  
Hallelujah! Hallelujah! :]  
[: For the Lord God Omnipotent reigneth.  
Hallelujah! Hallelujah! Hallelujah! Hallelujah! :]

For the Lord God omnipotent reigneth.  
[: Hallelujah! Hallelujah! Hallelujah! Hallelujah!  
Hallelujah! Hallelujah! Hallelujah! :]

The kingdom of this world  
Is become the kingdom of our Lord,  
And of His Christ, and of His Christ;  
And He shall reign for ever and ever,  
For ever and ever, forever and ever,

King of kings, and Lord of lords,  
[: King of kings, and Lord of lords, :]  
And Lord of lords,  
And He shall reign,  
And He shall reign forever and ever,  
King of kings, forever and ever,  
And Lord of lords,  
Hallelujah! Hallelujah!

And He shall reign forever and ever,  
[: King of kings! and Lord of lords! :]  
And He shall reign forever and ever,  
King of kings! and Lord of lords!  
Hallelujah! Hallelujah! Hallelujah! Hallelujah!  
Hallelujah!

## The Compton Heights Concert Band

### Flute

Trina Dickmann  
Rae Fischer  
Carol Marsh  
Kristen Marsh  
Marie Myers  
Lisa Tipton  
Elizabeth Watt

### Piccolo

Rae Fischer  
Lisa Tipton

### Bassoon

Harry Swanger

### Clarinet

Steve Abraham  
Lindsay Bacurin  
Ruth Bailey  
Erika Eggers  
John Kennedy  
Bryan Kirchoff  
Catherine Reitz  
Vicky ER Schorr  
Bob Shiflet  
Rebecca Swett  
Allison Webb  
E♭ Clarinet  
Vicky ER Schorr

### Bass Clarinet

Erin Jackson  
Laura Timm

### Alto Saxophone

Nancee Glaser  
Tom O'Brien

### Tenor Saxophone

Carl Lang

### Trumpet

Lisa Blackmore  
Mark Blackmore  
Thomas Goggin  
Atena Kasprzak  
Leo Makarewicz  
David Oppermann  
Jacqueline Redmond  
Steve Robinson  
Robert Souza  
Mary Weber

### French Horn

Bryan Dillon  
Cheryl Hoard  
Rebecca Moody  
Jim Olfky  
Paul Thomas

### Trombone

Christopher Goggin  
Robert Hockney  
Gary Lipsutz  
Ed Redmond  
Steve Wyatt

### Bass Trombone

Lindsay Barth

### Euphonium

Eric Yttri

### Tuba

Jeff Hoard  
Jon Schroeder

### Percussion

Renato Durante  
Mark Fox  
Adam Kopff  
Wm. Shane Williams

### Oboe

Diane Lieser

### Announcer

Lucy Schroeder

## The Compton Heights Band Herald Trumpets

Special Thanks to **David Oppermann**, Director of Bands at Francis Howell Central High School, who coordinated, rehearsed and directed the Compton Heights Band Herald Trumpets!

### David Oppermann, Dir.

Ryan Rader  
Emily White  
Dan Ebner  
Jackie Kiley  
Matt Flick  
Eric Strange  
Erik Carlson  
Meghann Henry

Alex White  
Scott Bankaitis  
Jim Johnson  
Alissa Lindquist  
Kyle McGowan  
Kayla Mugler  
Joe Depczynski  
Amanda Frasier

David Opperman  
Mark Blackmore  
Lisa Blackmore  
Steve Robinson  
Robert Souza  
Mary Weber

## St. Louis Metro Singers

Kevin McBeth, Music Director

In the mid 1950s, the Cosmopolitan Singers was formed. For more than thirty years, this premier choral group of more than one hundred singers performed throughout the St. Louis area. Upon the death of their founder and director in late 1986, the Cosmopolitan Singers officially dissolved; however, an overwhelming number of former members felt an intense desire to continue the group's mission - to perform a varied repertoire of quality choral music throughout the greater St. Louis area. As a result, the ST. LOUIS METRO SINGERS was formed in 1987.

The St. Louis Metro Singers has performed at many functions, including the grand re-opening of Union Station, a Cardinal baseball game at Busch Stadium, and Fair St. Louis under the Gateway Arch. Notably, the Chorus has appeared for the last 25 years with the St. Louis Symphony Orchestra, under the direction of Maestro Richard Hayman, at both Powell Hall and Queeny Park. The Chorus has also established regular seasonal concert venues at Southwest Baptist Church, St. Anthony of Padua Catholic Church, and in Columbia, Illinois, for the Dorothy Weinel Eppinger Foundation. In addition, the Chorus' annual Christmas concert is recorded every year by KMOX radio and broadcast on Christmas Eve. Today's performance marks the St. Louis Metro Singers' third appearance at the Compton Heights Concert Band's Holiday concerts.

The St. Louis Metro Singers now has a membership of eighty quality voices from St. Louis City and County, Metro East and many neighboring communities. The members represent varied ages and diverse backgrounds and desire to share their love of music with all the citizens of the St. Louis Metropolitan area. These are the St. Louis Metro Singers.  
[www.metro-singers.org](http://www.metro-singers.org)

Stephen Acheson	Kate Eastwood*	John Matlock	Neva Sprung
Carolynn Amen	Susan Engelmann	Mary Merkle*	Richard Sprung
Larry Amen	Linda Finkes*	Lynette Milles	Jim Starbuck*
John Bangert	Ed Flener	Maggie Norman	Frank S. Stobart*
Laura Bangert	Carol Forsyth	Bill Ostermeyer	Karen Stock
Wanda Bellairs	Anh Garber	Scott Owen	Betsy Stoff
Carolyn Bierwirth*	Carolyn Geitz	Trish Parker	Gary Stoff*
Adam Bock	Judy Henkel	Mary Pastor	Tina Telthorst
Bonnie Bock	Irene Hercules	Kristin Pierce	Adriene Terrill*
Susan Boland	Jan Herman	Melinda Pillow	Mary Jane Tessaro
Suzie Booth	Kelly Hieronymus	Don Platt	John Thomas
Gary Bortosky	Sarah Jones	Daniel Reiter	Larry Thomas
Terry Bouska*	Anne Judd	June Roberts	Susan Treese
Ellen Brandon	Ed Kaczerowski*	Jerome Rogers	Cecile Vaughn
Rich Brandon	John Kavanaugh	Fran Rohrer	Cherie Vaughn
Linda Branham	Mike Kavanaugh	Jane Rohrer	Joan Velten
Steve Branham	Sandy Kettelkamp*	Kari Russell	Joe Wagner
Diane Bunton	Patricia Kurre	Rosemary Saake	Joyce Wahlman*
Jerry Chulick	Norm Ladage	Kathleen Shaefel	Kathy White
Steve Clayton	Anne Leachman	Lisa Silliman	Elaine Wild
Cassie Coleman	Ann Lemon	Richard Simpson	Joanne Zelch
Dolores DeGoey	Valerie Liescheidt	Mike Smith	

## Bishop DuBourg Swing Dancers

<b>Don Burrus, Director</b>	Alumni	Brittany Barbeau	Cassie Seitz
Mike Acton	Deanne Martin	Lindsay Cady	Alyssa Wagner
Matt Cole	Andrew Fanz	Caroline Cole	Helen Rosenhoffer
Matt Horridge	Nick Schwartz	Nicole Gentilini	
Doug Hoffmann	James McClure	Kelly Mallmann	
Austy Martinez	Dave Stone	Thea Pershall	Coaches
Paul Mallmann		Anna Osborne	Don Burrus
Richard Stockmann		Chris Redfearn	Chris Arbin
Patrick White		Maggie Roberts	Mike Cobb
		Megan Scott	James Hediger



## The Bandwagon

### Notables Club

Hugh & Ann Bergman  
Bob Blankmann  
Carol Joy Brooks Memorial  
Tony Grasso  
\*Significant Monetary Support

Alderwoman Donna M.C. Baringer  
Representative Russ Carnahan  
Senator Patrick Dougherty  
Robert Nicolay  
Alderman Lewis Reed  
Aldermanic Pres, Jim Shrewsbury  
\*Significant Civic Support

### Sousafanatic \$1,000

Lindsay Barth  
Friends of Tower Grove Park  
Mrs. C.O. Hanes  
Sharon & Joe Intagliata, Unico, Inc.  
Nancy & Ken Kranzberg  
June & Fred Kummer  
John Howard Merle, ChFC, CLU,  
REBC, MBA, LUTCF  
Scarab Printing Arts

### Bandmaster \$500

Commerce Bank  
Bette & Andrew Constantin  
Lynn & Stephen Muench

### Asst. Bandmaster \$250

Jean & Mickey Alessi  
Friend of the Band  
Thomas & Carolyn Gilmore  
Bob & Jeanne Haddenhorst  
Betty S. Larson  
Loni & Steve Martin  
Norman & Shirley Williams

### Band Director \$150

Anne & Dick Bischoff  
Kenneth & Donna Bodart  
Hallye & Merle Bone  
Christina Carr  
Don & Tina Cavalli  
Peggy & Bob Drummond  
A. Fuller Glaser, Jr. Attorney at Law  
Billie Hirsch  
Judy & Bob Hrasky  
Ken & Jeanne Kirchoff  
Engelbert & Barbara Knaus  
Chris Miranti  
Cee Kase & John W. Minton, Jr.  
Joseph M. Mount & Mary G. Mount  
Mr. & Mrs. Donald Paul  
Cathryn, Michael & Matthew Rancilio  
Art & Arlene Stauder  
St. Louis Hills Neighborhood Assn.  
Robert & Ruth Ann Shifflet

### Band Member \$100

Ed & Charlotte Abraham  
Joann Arpiani  
Ruth & Rich Bailey  
Fred & Kitty Baumgarth  
Flora Bild  
Ann Boggiano  
Rick & Sue Constance  
Mr. & Mrs. Charles J. Cook  
Ann M. Corrigan  
Jim and Ginger Crooks  
Steve Crouch & Richard Price  
Alex & Gloria Deeken (Flag Man)  
Jon & Barbara Dressel  
Vivian Franke  
Mr. & Mrs. Jordaen H. Eggers  
Chris & Betty Eichenlaub  
Bob & Rainey Fahey  
Nancy Anne Fellingner  
Alyce Ficken  
Evelyn Finnie  
Vivian Franke  
Helen A. Hagen  
Martha Hartman  
Robert & Donna Heider  
Ruth Ann Henry  
Al & Marilyn Horst  
Stan Kann  
Anita Lieser  
Patricia Mazanec  
Margaret DelMonaco  
Patrick & Vicky O'Neill  
Mary Ellen Pearson  
Esther M. Phillips  
Mr. Paul Powell  
Ernest & Cynthia Sciaroni  
Fran Schlapprizzi  
Mr. & Mrs. Peter C. Sharamitaro, Jr.  
Anita Siegmund  
Killian Smith, Architect  
Regina Smith  
Betty & Dan Staufenbiel  
Nancy R. Suelflow  
William & N. Jean Vogel  
Ron & Dianne Winney  
Law Office of Wolfgram  
& Associates, P.C.  
Richard & Marjorie Wnuk

### Band Aide \$55

David & Elizabeth Anderson  
Mr. & Mrs. Richard Augustine, Sr.  
Betty-Jane M. Barsachs  
Tom & Kathy Bellavia  
Fran & Marie Bergmann  
Robert L. Blanke Jr.  
Frank & ShirleyAnn "Sas" Boro  
Mary Ann Dill  
Dr. Richard A. & Mrs. Anice M.L. Etz  
Nancy Anne Fellingner  
Debbie Fellenz  
Susan Fluegel

Harlie Frankel  
Dr. Raymond Frederick  
Helen A. Hagen  
Frank & Doris Hartmann  
Jackie & Roger Heitland  
Lil Loehr  
Mr. & Mrs. Robert C. Long  
Jeanette Mahacek  
Ray Marklin  
Marcella Milcic  
Bill & Rose Mueller  
June Niemeyer  
Mike & Peggy Pollihan  
Marian T. Reitz  
William H. Reitz  
Dorothy Roedder  
Earl & Arleen Roettger  
C.M. Ruprecht  
Albert E. Schaefer  
Michael Schroepel  
David J. Steger  
Grace M. Stover  
Annita Suffian  
Mark & Nancy Svendsen  
Laura Thomas  
Mike, Elyse, Stephanie,  
& Sam Tillman  
Jack Uxa  
Bryan Walker  
Anita Lieser  
Julie Webb  
Mr. & Mrs. Thomas E. Webb  
Kelly & Cathy White  
Pat & Bob Wortmann  
Jerry & Karen Wright  
George F. Zeiss / Barbara M. Zeiss

### Senior Band Aide \$50

W. Richard & Virginia Bartz  
Helen L. Bauer  
Rich & Rose Behnen  
Dr. George & Virginia Benson  
Pauline Bolk & Peggy Key  
Bud & Charlotte Bornholdt  
Mr. & Mrs. Robert H. Branom  
Frances R. Breckner  
Hartley and Joyce Carlson  
Bob & Sylvia Clobes  
Don and June Crowther  
James P. Cummings  
Medford & Shirley Darnell  
Marguerite C. Dougherty  
Margaret Del Monaco  
Mr. & Mrs. Miriam & Gene Dryden  
Mac & Marita Dryden  
Jane E. Eck  
Marie Eckert  
Hal & Audrey Eynon  
Dolores Fellenz  
Joanne & Bill Fogarty  
Erlene & Jack Frese  
Friends of the Band  
Mr. & Mrs. James Gaebler  
Richard A. Grady Family  
Robert & Ann Greenstein

### Senior Band Aide \$50

Gloria Griffero  
Gloria Guetzke  
Allen & Betty Haenni  
Estelle & Fred Handler  
Lee & Pat Hanley  
Kuni Hamon  
Eleanor B. Hecht  
Marguerite E. Heider  
Mr. Carl Henke  
Bob & June Henke  
Glenn Hensley  
Bill & Beth Hentchel  
Shirley Hergenroeder  
Mel & Louise Hock  
Adelma Hoerber  
Nellie Hohnsen  
George & Peggy Horton  
William and Dorothy Hungate  
Denny & Lynn Isenberg  
Lorraine Jacobs  
Mr. & Mrs. Cliff Juengst  
Midge & Norm Karl  
Nancy King  
Rosemarie Kirchoefer  
Andy & Ruth Kocot  
Joyce & Bill Kolnik  
Arnold & Janet Kreitman  
Constance & Norbert Kreuter  
Mr. & Mrs. Robert P. Laclede  
Dave & Judy Lane  
Bernice Langing  
Barbara Lindecke  
Vernon & Versa Lindemann  
Billie Linder  
Nancy Linn  
Bill & Elenor Luebbers  
Patricia Lynch  
Lou & Nola Macchi  
Anna Marie Mackey  
Mrs. R.J. Matushek  
Dan & Margaret McGrath  
Barry & Judy McLaughlin  
Mary Merrick  
Bill & Joan Miller  
Allen Milo and LaVerne Lee  
Tom & Joanne Mudd  
George & Evelyn Murphy  
Melvin Nierdieck  
Joe & Sharon Orf

Jerry Parnas  
Don & Joyce Patt  
Florence Phillips  
William Piper  
Mr. & Mrs. John Pisoni  
Bill & Mary Pitcher  
Gerri & Fred Praechter  
Lucile Quernheim  
Elizabeth M. Roche  
Patricia Roerig  
Dale and Jackie Ruthsatz  
Bob & Betty Rybacki  
Vi Saffo  
Wayne Sachtleben  
Marilyn Sax  
Ruth Schemkes  
Larry & Marcella Schultz  
Emily Schwarz  
Nathan Simon  
Sisters of the Most Precious Blood  
Mary Etta Skinner  
Bruce E. Smith  
Cathie Smith  
Ralph Soebbing  
B & C Spencer  
Larry Stackhouse  
Mr. & Mrs. Robert Stanton  
Betty Stevenson  
Robert J. Stock  
Shirley Stoecker  
Marilyn Stuesse  
Betty & Bill Taylor  
Harold & Kermin Thies  
Gene & Jeanne Vogt  
Bryan Walker  
M/M W. Webster/L.Bochantin  
Jim & Shirley Weir  
Mimi Jeske & Tom Wilhite  
Ann & Joe Wilson  
Chris & Pat Winkelmann  
Florentine Woziak  
Dotty Young

### Memorials

Philip Alderman  
Edwin Bender  
Betty Blankmann  
Carol Joy Brooks  
Mildred Dennis  
Fred Kaucher, Jr.

Harrison Don King

Thanks to: Sandi Hagler, Jean Bender, Ann Reichenbacher, Lorene Ferrario, Vi Petrowski, Anne Serkin, Jana & Thomas Embry, Robert & Linda Eves, Kevin & Christine Schwab, Marianna Steffens, Al & Marilyn Horst, Mr. & Mrs. Robert Morton, David & Laura Suedkamp & Family, Joseph & Carole Witzig, T.J. Mullin, Michael & Hildegard McEntee, Michael & Sandra Hagler, Dan & Patricia Heuermann, Jim & Jane Orling, James & Carole Droste, David & Pat Munz, Earl / Anne Nelson, Aaron and Linda Baese, Stephen and Peggy England

Carolyn Otz

Thanks to: Mary Jane, Ruth, Marion C, Janet, Kathy, Marian F., Barbara, Cindy

Verna E. Schroeder  
Dorothy Schumann  
Harold A. Spellmeyer

Kenneth S. Tiefenbrunn

Thanks to: Mark & Lisa Blackmore, Washington University, Division of Cardiology; C&R Mechanical, Dr. & Mrs. Cain, Dr. James R. Criscione, William Piper, Mrs. Gloria Harrell, Mrs. Joyce Hennen, Paula, Joe, Catherine & Ellen Kenzora Family, Michael, Michelle, Julie & David Isserman, Richard & Carol Sexauer, Frank A. Weber

### Matching Gifts

AXA Foundation  
Boeing  
Compaq  
Hewlett-Packard  
IBM  
Lucent Technologies  
Norfolk Southern Foundation  
Pfizer Foundation  
SBC Foundation  
Sigma-Aldrich

## The Compton Heights Concert Band

Is Supported by the Following Sponsors:



Adam's Mark Hotel, Catherine Manley Gaylord Foundation, Clifford Willard Gaylord Foundation, Foot & Ankle Associates, Missouri Arts Council, Regional Arts

Commission, Southwest Bank, St. Louis Parks & Recreation Department, Tower Grove Park, and Bandwagon Members.



## Please Support The Compton Heights Band!

We are not tax supported as the Zoo, Art Museum, Missouri Botanical Garden, Missouri Historical Museum and Science Center are by You. Sponsors provide a portion and we appreciate that very much, but most is raised by band members' volunteer efforts at our two charity bingos a week, 52 weeks a year. The Bandwagon, as it stands, represents less than 10% of our summer concert season costs, which is the main season for the Compton Heights Concert Band. We need everyone's help more than ever. We provide world-class soloists and genuine family entertainment not otherwise available in the St. Louis metro area. We need all of you to pitch in to keep the Sousa tradition alive in St. Louis! We are a great St. Louis grass-roots arts group worthy of and in need of your support. **Please help us by doing at least one of the following at every concert!**

### Become A Bandwagon Member!

\* Purchase CDs, DVDs, T-Shirts, and Books at our Promotional Table.

\*Join E-Script at Schnucks or Donate at our promotional table!

## The 30th Anniversary Celebration of the Founding of The Compton Heights Band!

In 2006, the Compton Heights Concert Band celebrated the 30th Anniversary of its founding. Since its 1976 appearance for the Compton Heights Neighborhood Association Easter Parade, the Band has come a long way and now features year-round rehearsals, a tandem summer series of concerts, *Sunday Serenades* and *Musical Mondays*, the annual Powell Symphony Hall Holiday Pops concert, the Annual Memorial Day concert and several private and public appearances each year. In addition, the Compton Heights Concert Band has released 20 CDs/videos/DVDs in the last eight years, as well as producing thirty one-half hour episodes of Sunrise Serenades, our CBS Channel 4 weekly show which aired for 14 months.

To mark this unusual achievement, our exciting *Sunday Serenades* and *Musical Mondays* series featured some of the best artists of the past who appeared with us, as well as, superb new ones.

The debut of our Compton Heights Concert Band Herald Trumpet here at Powell Symphony Hall in the Holiday Pops concert in 2005 was only the beginning of what we hope will be many important appearances for this exciting group. With funding, we hope to create a model youth trumpet skills development program which will provide training and instruction in the playing of the regular Bb trumpet and in the Herald Trumpet. The Herald Trumpet appearances will give the youth ensemble members a chance for visible public acclaim for their hard work, and a reward for developing their trumpet playing skills.

We also have several major projects we have worked on for years, which will be announced early in 2007. They include an unprecedented capital campaign to support the acquisition, renovation, and endowment of the Band's own headquarters and concert hall in the former Immaculate Conception Catholic Church and rectory, two historic, beautiful and fantastic structures. See the program, infra, and a Saint Louis City legislative effort. Both will insure the future stability of the Compton Heights Concert Band and result in quantum leaps for the organization. Stay tuned for these exciting announcements!

Thank you! Happy Holidays! And Enjoy Tonight's Program!  
Harry F. Swanger, President / Executive Director

## Strike Up The Band!

Join the Bandwagon! America's Band! America's Music!

The Compton Heights Band needs your help to keep the Sousa tradition of patriotic American music alive and well in St. Louis! Our Bandwagon donor support group is the way to do it. Your donation will be put to good use. We were recently named a "cultural overachiever", StL.Post-Dispatch. So take a moment to become a BANDWAGON supporter of the Compton Heights Concert Band. **"You have a musical jewel! Take good care of it!"** says James Christensen, former Disney Music Director.



We now have greater needs than ever, with our new headquarters and concert hall, located in the former Immaculate Conception Rectory and Church. Please help us meet the challenge of this exciting venture.

Sincerely, Harry Swanger, President/Executive Director

### Send to:

Compton Heights Band, Inc., 3120 Lafayette Ave St. Louis, MO 63104  
www.chband.org (314) 776-2227, FAX (314) 772-9797

### Make Your Tax Deductible Donation Today!

#### I want to help the Band and be a Bandwagon member!

- I would like to participate in the Capital Campaign for the new concert hall / headquarters! Please contact me.
- \$5,000+ Notables Club (Charitable Remainder Trust, Stock, Real Est.)
- \$2,500 President's Circle
- \$1,000 Sousafanatic
- \$ 500 Bandmaster
- \$ 250 Asst. Bandmaster
- \$ 150 Band Director
- \$ 100 Band Member
- \$ 55 Band Aide
- \$ 50 Senior Band Aide (65+)

Please print your name as you would like it listed in any programs.

Name: \_\_\_\_\_

Address: \_\_\_\_\_

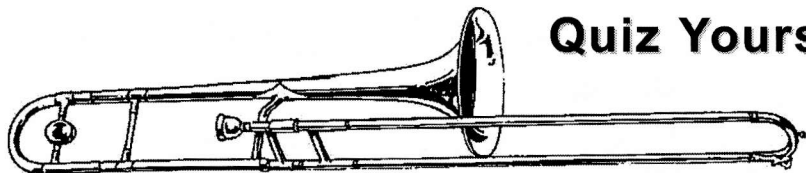
City \_\_\_\_\_ State \_\_\_\_\_ Zip \_\_\_\_\_

Telephone: \_\_\_\_\_ Email: \_\_\_\_\_

Check enclosed (Payable to Compton Heights Band, Inc.)

VS/MC/DS/AE# \_\_\_\_\_ Exp. Date \_\_\_\_\_

**Check with your company for a corporate matching gift!**



## Quiz Yourself!

- D**id you play an instrument in High School or College?
- Are you presently playing but want more of a challenge?
- Do you want to be part of the community?
- Does a son, daughter, or friend play an instrument?
- Need an outlet for playing and improving?
- Looking for social opportunities?
- Are you a professional looking to get away from it all?

If you are a musician and "yes" is the answer to any of these questions, **The Compton Heights Concert Band** offers a great outlet for you! Players of all ages practice weekly playing a broad range of enjoyable music including originally scored Sousa marches, symphonic favorites, nostalgic classics, ethnic specialties, Broadway selections and much more! In addition, as a Band member you'll rub shoulders with some of the finest musicians in the world and outstanding national touring groups. Be a part of the action by joining **The Compton Heights Concert Band** now! **Openings exist in all sections!**

**Contact us today! Join The Band! Call (314) 776-2227**

**Fill out the form below and take it to the promotional table or send it to: Compton Heights Band  
3120 Lafayette, Saint Louis, MO 63104.**

**I would like join the Compton Heights Band!**

Name: \_\_\_\_\_

Address: \_\_\_\_\_

City \_\_\_\_\_ State \_\_\_\_\_ Zip \_\_\_\_\_

Phone: \_\_\_\_\_ (Daytime)

Phone: \_\_\_\_\_ (Nighttime)

Email: \_\_\_\_\_

Instrument: \_\_\_\_\_

Number of Years on Instrument \_\_\_\_\_



YOU HAVE  
OUR SUPPORT:

# Without you, there would be no applause.

National City Bank is proud to support  
The Compton Heights Concert Band  
Come see us for your banking needs at  
4131 So Grand or call 314-814-8104

NationalCity.com

**NationalCity**<sup>®</sup>

Member FDIC  
Copyright © National City Corporation